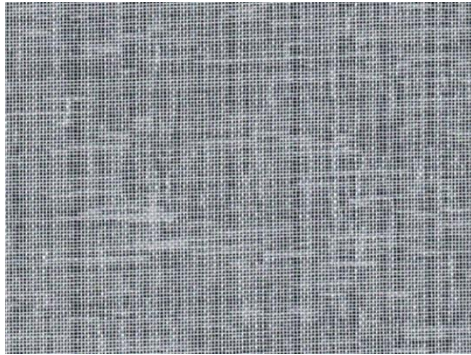


Slumber



## Specifications:

content: 100% Polyester

finish: none

width: 118"

repeat: none

weight: 8.01 oz/lin.yd.

UTR / RR Sample is RR

NFPA 701 Method 1

## Performance:

color fastness: Solid Class 3 (AATCC 8) dry  
Class 3 (AATCC 8) wet

light fastness: Class 4/60 hrs. min ( AATCC 16 option 1)

made in: Turkey

## Care &amp; Cleanability:

S – Dry clean recommended